
INTRODUCTION

External Antenna (433MHz)

1. GENERAL DESCRIPTION

Model No
ADA-280SW-433MHz-1.5M-SMA/M

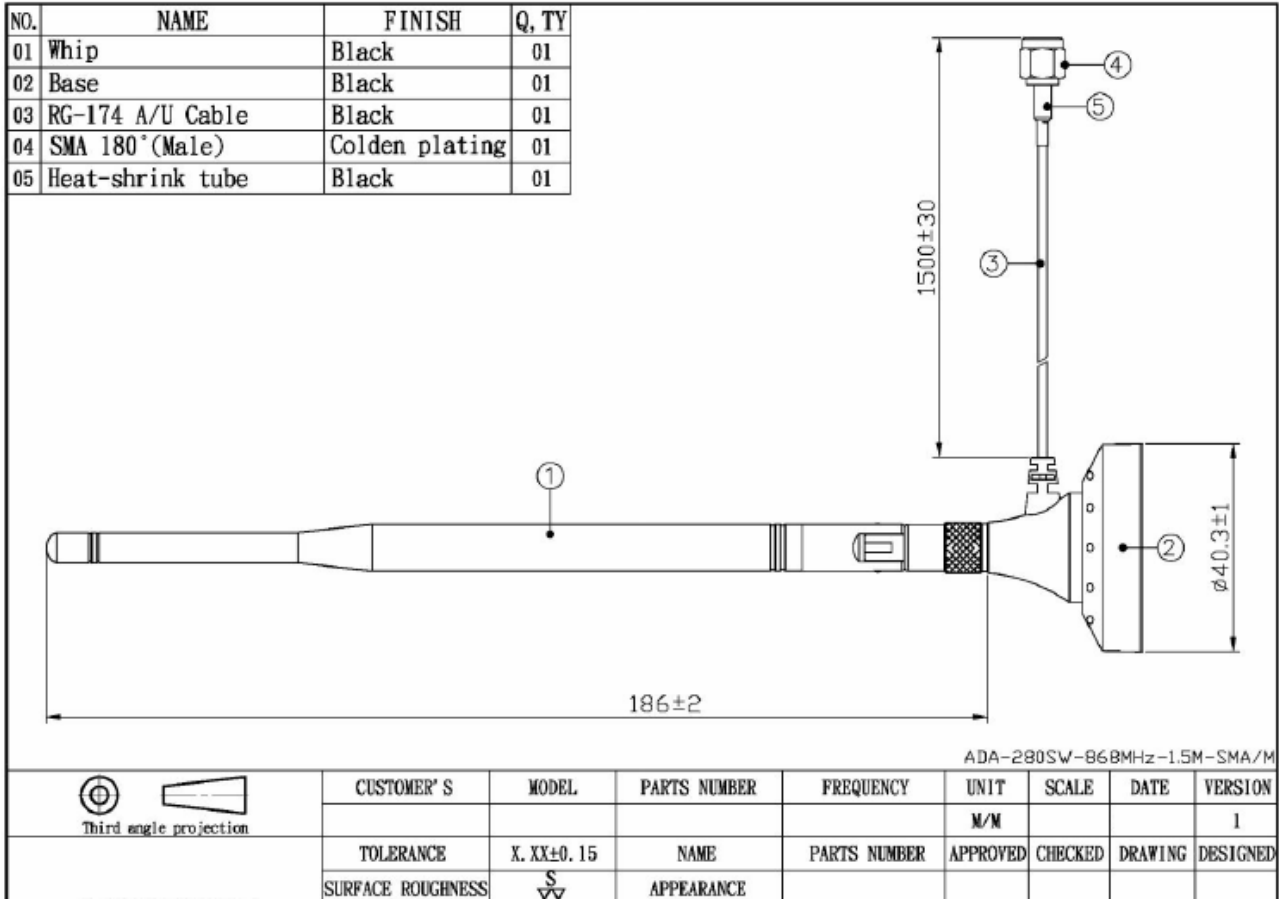
1.1 Electrical Properties

Parameter	Description
Frequency Band	433MHz
Nominal Impedance	50 ohm
Polarization	Vertical
V.S.W.R	2.0 : 1
Antenna Gain	2.5db

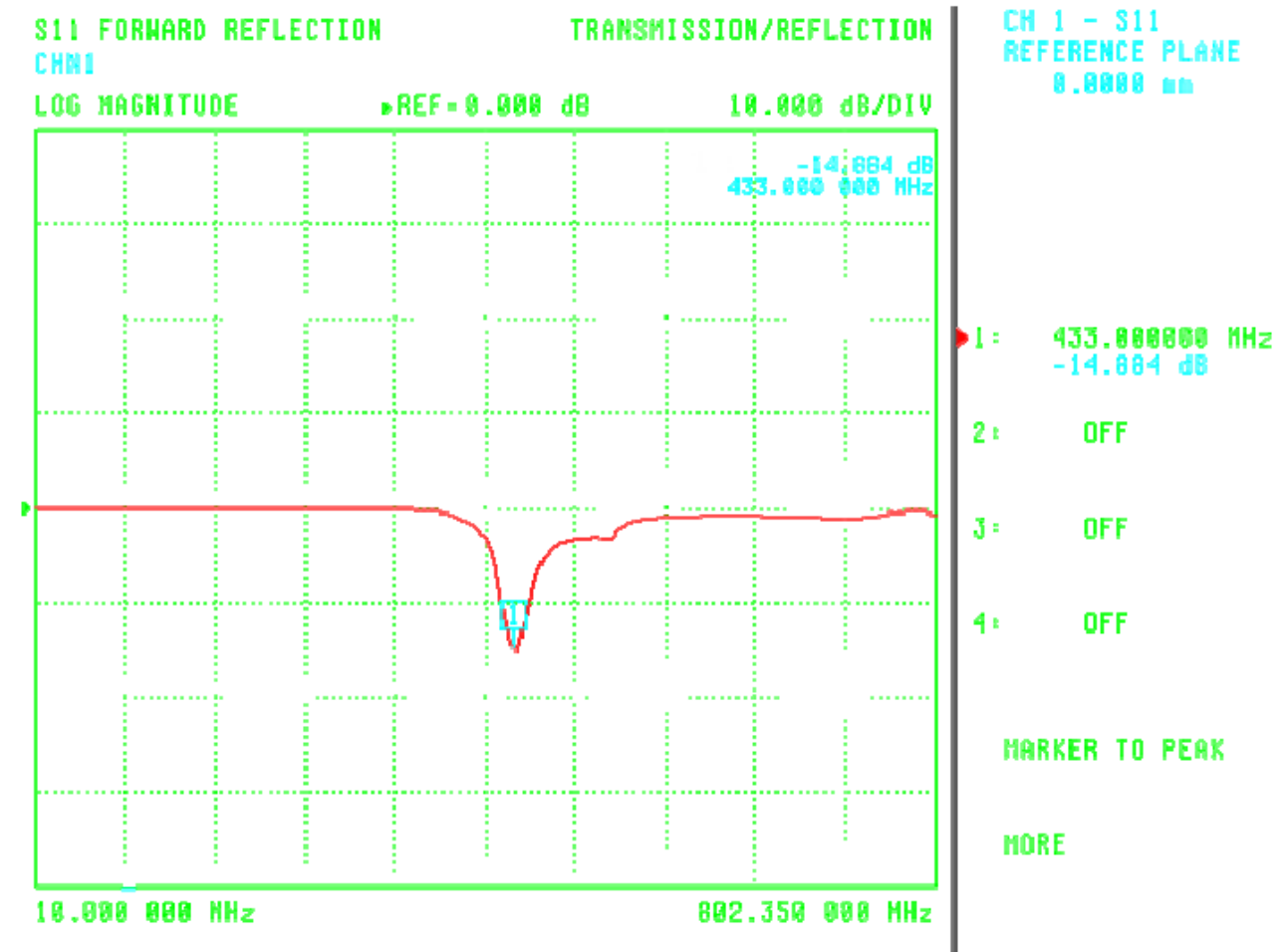
1.2 Mechanical Properties

Parameter	Description
Antenna Type	External Antenna
Touch Type	Screw Type
Connector Type	SMA 180°(Male)
Antenna Dimensions	186 ± 2
Antenna Cable Total Length	RG-174 A/U 1500 mm ±30
Antenna Color	Black
Operating Temperature Range	-20°C~+60°C
Storage Temperature Range	-30°C~+70°C

2. Appearance



3. Return Loss, V.S.W.R. and Smith Chart



S11 FORWARD REFLECTION

TRANSMISSION/REFLECTION

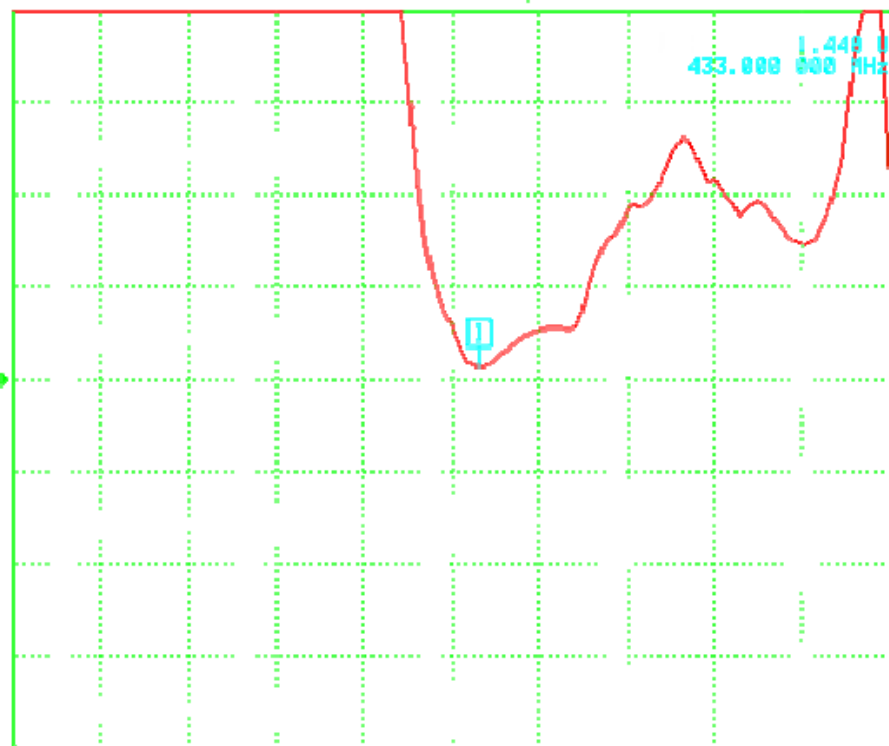
CH 1 - S11
REFERENCE PLANE
0.0000 mm

CHN1

REF - 0.000 pU

10.000 U/DIV

SWR



1: 433.000000 MHz
1.448 U

2: OFF

3: OFF

4: OFF

MARKER TO PEAK

MORE

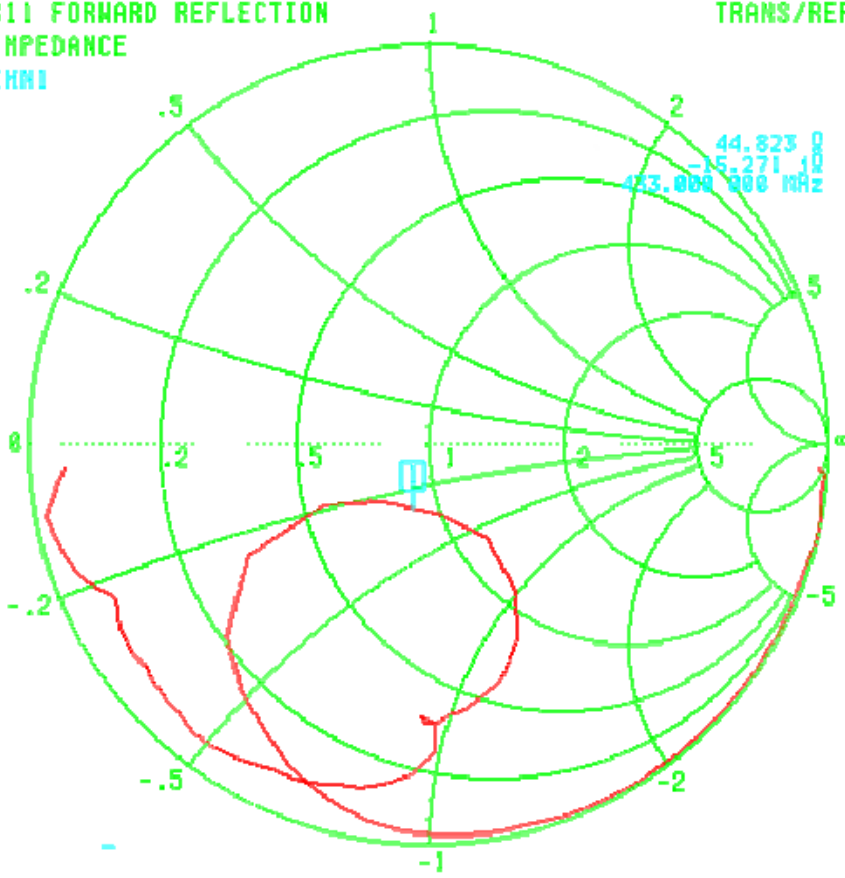
10.000 000 MHz

802.350 000 MHz

S11 FORWARD REFLECTION
IMPEDANCE
CHN1

TRANS/REFL

CH 1 - S11
REFERENCE PLANE
0.0000 mm



- 1: 433.000000 MHz
44.823 Ω
-15.271 jΩ
- 2: OFF
- 3: OFF
- 4: OFF

MARKER TO PEAK

MORE

10.000 000 MHz - 802.350 000 MHz