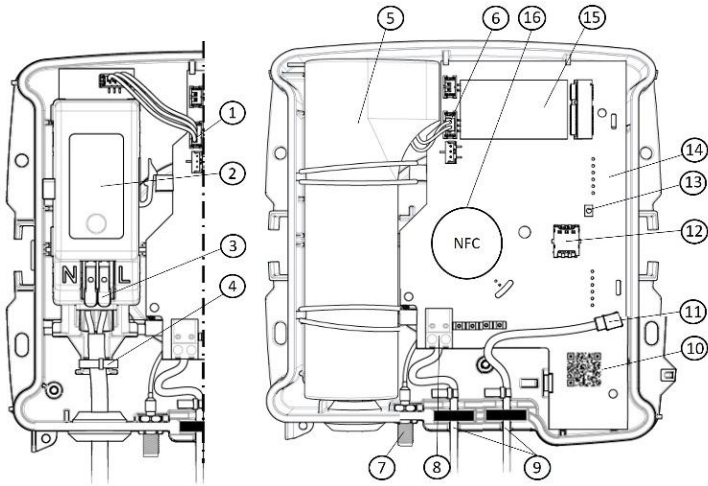
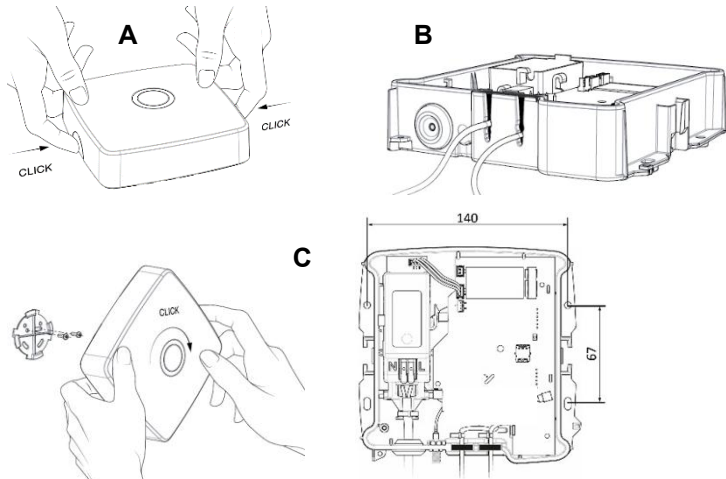


Elvaco Edge Play Gateway Quick manual



1. PSU cable connector 1
2. PSU
3. Mains power supply (spring terminal)
4. Cable tie (Not included)
5. Battery
6. Battery cable connector
7. Wireless M-Bus connector (SMA-f)
8. M-Bus master terminal
9. Membrane & cable tie
10. DevEUI
11. Cellular antenna connector (MCX-f)
12. SIM card
13. Push button
14. Internal wireless M-Bus antenna
15. Option module x2 (front & backside)
16. NFC antenna



Installation

Elvaco Edge can be mounted on the wall using a bayonet mount or fixed directly to the wall (C). Ensure that screws appropriate for the mounting surface are used. This should be performed by a qualified installer to ensure a reliable installation. The lid is opened by firmly pressing both sides (A). For external cable wiring, press the cables through the foam to the correct diameter. Ensure the foam is sealed after cable is mounted out of enclosure (B). Note that it can take up to 24 hours before the material has returned to its natural shape. Cut the knockouts according to markings on the lid for better cable fit and use a cable tie for strain relief on all cables (4, 9). For installations of Elvaco Edge with IP65, ensure that no cable is routed through the membranes (9) to maintain its IP65 protection rating.

M-Bus

Elvaco Edge is equipped with an integrated M-Bus master for 4 meters (4T). M-Bus is a multi-drop 2-wire bus without polarity. All connected M-Bus slaves must have unique primary or secondary M-Bus addresses, depending on the addressing mode. Use a cable with an area of 0.25-1.5mm², e.g. a standard telephone cable (EKKX 2x2x0.5) and connect the wiring to the M-Bus master port A-B (8). Ensure the cable length does not exceed 50 meters.

Wireless M-Bus

For optimal wireless M-Bus reception, place the Elvaco Edge in clear line of sight, ensuring there are no objects or walls blocking the internal wireless M-Bus antenna (14).

Battery or mains supply

The battery-powered Elvaco Edge gateway can be installed by a technician without any electrical certification.

For Elvaco Edge with PSU, installation should be performed by a qualified electrician or an installer with the required knowledge. Prepare the cables according to the markings on the PSU label (2), ensuring a strip length of 8 mm for the conductor and 33 mm for the main cable. Connect the blue mains conductor to neutral (N) and brown to phase (L). The power supply must be protected with a 10 A circuit breaker of characteristic B or C (slow blow). The unit must be connected via a clearly marked, easily accessible switch that breaks both phase and neutral allowing the unit to be switched off during service work.

Note! All LEDs will flash blue as confirmation when the gateway is powered up.

Install Elvaco Edge Play Gateway

A prerequisite for installing Elvaco Edge using Elvaco Play is to have both an account and an organization in Elvaco Play, and to have the Elvaco Play App downloaded on your smartphone.

1. Scan to download Elvaco Play App using below QR code



Google Play



App store

2. Open Elvaco Play App or go to <https://play.elvaco.com/>
3. Log in to your account (or create an account if you aren't already an Elvaco Play user)
4. Ask your admin to invite you to an existing organization (or create an organization if there is none)

Your Elvaco Edge is now powered but remains in inactive mode. Before you start the installation process, make sure that you are in the correct organization. See the guided workflow below for installing your Elvaco Edge using Elvaco Play App.

1. Press *Install*
2. Scan the Elvaco Play ready QR code* located on the lid of the gateway to claim it to your Elvaco Play organization
3. Press *Continue*
4. Scan by placing the NFC antenna in your phone on the center of your gateway



5. [Recommended] Assign a location (i.e facility name) to your device to know where it is located
6. Your installation is now complete

*Elvaco Play Ready QR code label should be removed after complete installation.

The installation sequence takes up to 180 seconds. Each step is described using the LEDs as well, seen below.

- | | | | | |
|--|---|--|--|---|
| 1.  | 2.  | 3.  | 4.  |  |
| Searching for mobile network (approx. 90 s) | Mobile network is connected | Establishing connection to Elvaco Play | Activation or restart successful | Unsuccessful installation* |

*If installation is unsuccessful, try the following.

1. Check if there is mobile network reception on your phone.
2. Make sure the SIM card and an eventual external antenna for mobile networks is correctly mounted.

Install meters

Elvaco Play allows you to install both wired and wireless M-Bus devices. You can choose to install devices individually or in batches. Before you start the installation process, make sure that you are logged in and in the correct organization. See the guided workflow below for installing your meters.

Install single meters

Installing an individual meter can be done either be done using Elvaco Play App or Elvaco Play Portal. Installing a meter using Elvaco Play portal, see the section 'Batch install meters' below.

1. Open Elvaco Play App
2. Press *Install*
3. Manually insert the serial number
4. Insert encryption key or baud rate depending on type of meter
5. [Recommended] Create a Location and assign the device to it
6. Installation completed

Batch install meters

Installing a batch of meters (or one meter) can be done using the import functionality in Elvaco Play Portal.

1. Go to <https://play.elvaco.com/>
2. Press the tab *Devices*
3. Press *Add meter*
4. Switch to *Upload file* and download Meter template
5. Fill out the template according to presented instructions
6. Import the file into Elvaco Play and press *Add*

Digital documentation

For the full user manual of Elvaco Play Edge and our Elvaco AI Assistant, go to Elvaco Support site.



Elvaco Support Site

Contact

Support emails

support@elvaco.com

support@elvaco.se

support@elvaco.de

Support phone number

+46 300-93 99 30

Technical Specification

Protection class	IP55 or IP65* (*Only Outdoor variants)
Mounting	Wall mounting. Pole mount kit purchased separately (1100517)
Battery (from Elvaco)	38 Ah, 3.6 V
Main supply voltage	Push-in spring terminal (0.75-1.5mm ²)
Nominal voltage	100-240 VAC (+/- 10%)
Frequency	50/60 Hz
Power consumption (max / nom)	3.8 W / 1 W
Over voltage category	OVC III (PSU)
M-Bus master port (screw terminal)	Cable area 0.25 -1.5 mm ² (N.b! For maintaining IP65 compliance on Elvaco Edge Outdoor, the M-Bus cable must be routed through protective cable gland with an increased outer diameter of 3-6 mm.)
M-Bus load capacity	4T (6 mA)
Maximum M-Bus cable length	50 m
Connector for external LTE antenna	MCX-f
Connector for external wM-Bus antenna	SMA-f

Safety

The warranty does not cover damage to the product caused by usage in any other way than described. Elvaco AB cannot be liable for personal injury or property damage caused by usage in any other way than described.

SIMPLIFIED DECLARATION OF CONFORMITY

Hereby, Elvaco declares that the product is in compliance with the directives below. The complete Declaration of Conformity can be found at www.elvaco.com/en > Search on product.

VEREINFACHTE KONFORMITÄTSEKTLÄRUNG

Hiermit erklärt Elvaco, dass das Produkt mit den folgenden Richtlinien übereinstimmt. Die vollständige Konformitätserklärung finden Sie unter www.elvaco.se/en > Suche nach Produkt.

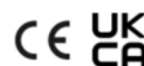
EU / UE:

- 2014/53/EU (RED)
- 2014/30/EU (EMC)
- 2014/35/EU (LVD)
- 2011/65/EU + 2015/863 (RoHS)

UK / GB:

- 2017 No. 1206 (RED)
- 2016 No. 1091 (EMC)
- 2016 No. 1101 (LVD)
- 2012 No. 3032 (RoHS)

©2026, Elvaco AB. All rights reserved. Documentation and product are provided on an "as is" basis only and may contain deficiencies or inadequacies. Elvaco AB takes no responsibility for damages, liabilities or other losses by using this product. No part of the contents of this manual may be transmitted or reproduced in any form by any means without the written permission of Elvaco AB. Printed in Sweden.



elvaco

Elvaco Edge Quick Manual EN

Document ID: 1090167

Version: 1.0.1