



SMART METERING SOLUTIONS

Turning raw energy data into powerful insights

elvac^o



Collect. Connect. Make it count.

Turning raw energy data into powerful insights.

For over 40 years, Elvaco has been driven by one goal: delivering the best solutions for remote meter reading with a clear focus on sustainability, safety, and efficiency. As part of the Bemsig Group, we combine our expertise with that of hundreds of specialists in wireless communication, security, and sustainable technologies – making us one of the world’s leading providers of building automation and metering solutions.


At Elvaco, we transform raw energy data into valuable insights that enable smarter, more efficient energy management. With a technology-neutral approach, we work across multiple communication standards – including M-Bus, LoRaWAN, NB-IoT, and LTE – to deliver smart metering solutions tailored to each client’s needs. From accurate remote meter readings to full digital integration, our solutions ensure a seamless flow of data from the field to your systems.

We **collect** high-quality energy data through reliable, scalable hardware – sensors, meters, connectivity modules, and gateways – built with a strong focus on product and production quality. We **connect** that data with powerful software that visualizes, analyzes, and integrates it seamlessly with ERP and building management systems, giving you full transparency and control.

With this foundation, you can act – optimizing energy use, reducing costs, improving operational security, and boosting sustainability. We ensure open standards, interoperability, and adherence to international data integrity and security requirements, so you remain flexible and independent.

Elvaco makes energy data accessible, insightful, and ready to drive change. Now it’s your turn: **Make it Count.**

Elvaco in numbers

<p>OFFICES</p>  <p>Kungsbacka, Sweden Ansbach, Germany</p>	<p>EXPERIENCE IN METERING</p> <p>40+</p> <p>Years</p>	<p>CUSTOMERS</p> <p>3000+</p> <p>Globally</p>
<p>METER POINTS</p> <p>300 000+</p> <p>Managed in our device management system</p>	<p>LPWAN MODULES</p> <p>180 000+</p> <p>Produced each year</p>	<p>GATEWAYS</p> <p>25 000+</p> <p>Produced each year</p>

Infrastructure M-Bus, wM-Bus

Products to successfully build your end-to-end metering chain in the field.

In this product category, Elvaco offers all products needed to build an infrastructure for M-Bus or wireless M-Bus: gateways, masters, receivers and turn-key solutions. For more information, visit elvaco.com.

Elvaco Edge

Elvaco Edge is our latest, ground-breaking Gateway with included connectivity for wired and wireless M-Bus meters. It has versatile power supply options with best-in-class battery driven gateway.

Some of the benefits:

- Seamless and instant access to your meter values with included connectivity
- Extremely high sensitivity on wireless M-Bus reception
- Connect any M-Bus meter (wired or wireless) conforming to EN-13757-4 and OMS
- Up to 128 wired M-Bus devices (128T)
- Option with IP65 housing for outdoor use



CMe3100

The CMe3100 M-Bus Metering Gateway for fixed networks reads up to 512 meters, compiles reports, and sends data via fixed network protocols. It is configurable via web and supports MQTT, BACnet, ModBus, DLMS, JSON, REST, and includes a full M-Bus decoder.



CMe2100LTE

The CMe2100LTE M-Bus Metering Gateway for mobile networks reads up to 256 M-Bus meters, delivers reports via LTE, and supports 16 M-Bus loads. It is remotely configurable via SMS or HTTP and includes a full M-Bus decoder.





CMeX50

CMeX50 is a wM-Bus receiver enabling CMe Gateways to communicate with up to 800 meters in a secure way. It features individual encryption keys and has a cable-free IR interface for easy connection to CMe/ CMeX products.



CGc IP Box

The box is a turn-key solution for fixed networks. It includes a CMe3100 and CMeX50 or CMeX10S-13S, supporting up to 512 meters. It features a service breaker and is available for wired or wireless M-Bus (434 MHz and 868 MHz).



CGc LTE Box

The box is a turn-key solution for mobile networks. It includes a CMe3100, CMeX50 or CMeX10S-13S, and an LTE router for 4G/3G/2G. It supports wired (up to 512) or wM-Bus meters (434 MHz/868 MHz) and is ideal where LTE connectivity is required.



CMi-Box Receiver

The box includes a CMi5110 for wireless M-Bus data collection, forwarding to a metering gateway. Available with 24 V or 230 V power supply and internal or external antenna.



Sensors

Elvaco offers a wide range of sensors for measuring of, for instance, temperature, humidity, CO₂, movement and VOC level.

The sensors are available in different technologies, for indoor/outdoor use, and with different focus and functionalities. Some of the sensors are easily configured through a user-friendly mobile app.

Elvaco Sense Series

Elvaco Sense is a sleek, wireless M-Bus sensor series for indoor use, measuring temperature, humidity, and CO₂. Battery-powered with up to 16 years' lifetime, they blend discreetly into commercial, public, and private spaces.



CMa Series

Cost-effective temperature and humidity sensors for indoor and outdoor use, supporting M-Bus or wireless M-Bus, with or without display—helping improve energy efficiency and indoor climate.



Display sensors

LoRaWAN sensors with e-paper display for indoor use, measuring CO₂, temperature, and humidity. With up to 10 years' battery life, easy NFC setup, and sleek Scandinavian design, they provide real-time data with minimal maintenance.





ERS LoRa

Indoor sensor, LoRaWAN, for temperature, humidity, light and motion.



ERS CO₂ LoRa

Indoor sensor, LoRaWAN, for CO₂, temperature, humidity, light and motion.



ERS CO₂ Lite LoRa

Indoor sensor, LoRaWAN, for CO₂, temperature and humidity.



ERS VOC LoRa

Indoor sensor, LoRaWAN, for VOC level, temperature, humidity, light and motion.



EMS LoRa

Indoor sensor, LoRaWAN, for temperature, humidity, acceleration, door openings/closings, and water leakage.



ELT LoRa

Outdoor sensor, LoRaWAN, for temperature, humidity, acceleration and atmospheric pressure.



Communication modules LoRaWAN

Elvaco offers integrated meter modules to all leading meter manufacturers for heat meters in the market.

The modules have long communication range and high energy-efficiency to meet the needs in IoT. The modules are easily configured through Elvaco OTC app (via NFC).

CMi4110

Integrated meter module for Landis+Gyr. Compatible with L+G UH50, L+G UC50.



CMi4111

Integrated meter module for Landis+Gyr. Compatible with L+G T230, L+G T330.



CMi4130

Integrated meter module for Itron. Compatible with Itron CF 51, Itron CF 55, Itron ECHO II.



CMi4140

Integrated meter module for Kamstrup. Compatible with Kamstrup MULTICAL 403/603/803.



CMi4160

Integrated meter module for Diehl Metering. Compatible with Diehl SHARKY 775.



CMi4170

Integrated meter module for Engelmann. Compatible with Engelmann SensoStar, Engelmann SensoStar C.



Communication modules NB-IoT

Elvaco offers integrated meter modules with NB-IoT communication for heat meters from well-known meter manufacturers.

The modules are designed to bring all the benefits of NB-IoT and to enable our customers to meet the higher requirements of range, lifetime and security. The modules are easily configured through Elvaco OTC app (via NFC).

CMi6110

Integrated meter module for Landis+Gyr. Compatible with L+G UH50, L+G UC50.



CMi6140

Integrated meter module for Kamstrup. Compatible with Kamstrup MULTICAL 403/603/803.



CMi6160

Integrated meter module for Diehl Metering. Compatible with Diehl Metering SHARKY 775, SCYLAR Int 8.



Software

Elvaco offers services aimed at simplifying processes for utilities and real estate companies.

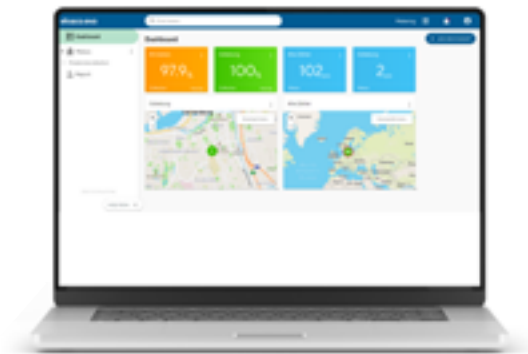
We deliver world-class energy metering and sub-metering, integrations and exports to your ERP/ BMS and support by our skilled staff. Our collection system is open, which gives you the freedom to choose meters or easily integrate your existing meter installations.

elvaco.evo

For visualization and analysis

Our meter value portal for visualization and analysis of energy data for utilities, property owners and service providers. The level of service is determined based on your needs and prerequisites - ranging from total responsibility to integration to existing metering system.

- Open meter platform
- Acquisition, visualization and analysis of measurement data
- Energy optimization in buildings
- Optimization of heat networks
- Meter alarms; threshold monitoring
- Demand-oriented, individual exports



Elvaco Play

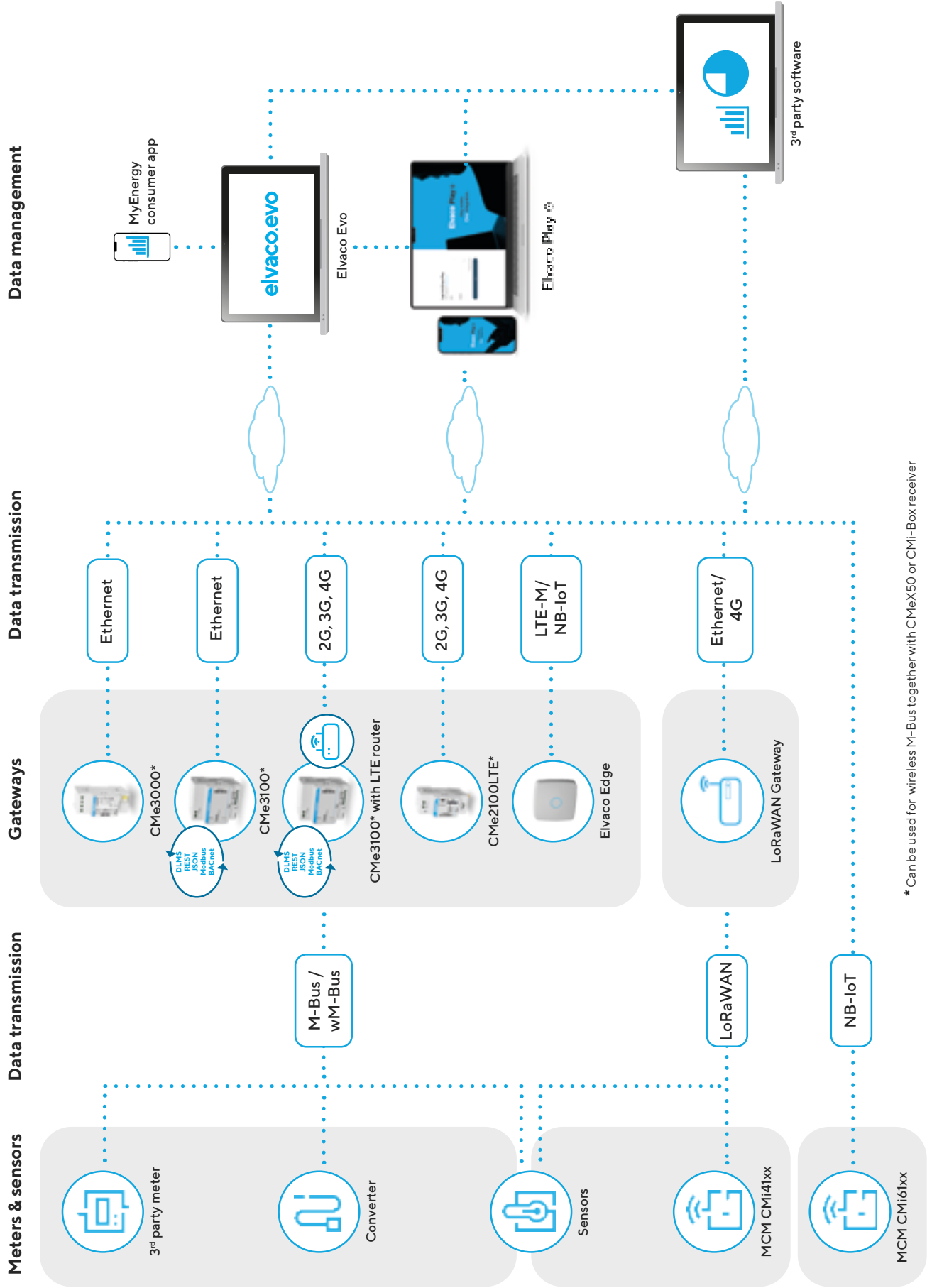
Any meter. One integration.

Managing metering data across multiple properties and devices can be a hassle. Disconnected systems, outdated tools, and inefficient workflows slow you down. Elvaco Play changes that by bringing everything into one seamless platform.


- Product delivery including connectivity and function
- No configuration of hardware
- Streamlined and product-unique installation workflow
- Direct access to meter data in the cloud - free of charge (for 1 value a day)
- Safe handling of security related items (key management)
- User and organization management



Connectivity overview



* Can be used for wireless M-Bus together with CMeX50 or CMI-Box receiver



We make it easy for you to see clearer, act faster, and do better. Whether it's optimizing costs, securing operations, or conserving resources, we make it all possible – seamlessly, accurately, and efficiently.

We **collect** and **connect**, to make sure you have everything you need to get it right.

Now it's your turn. **Make it count.**

elvaco

PART OF
BEMSIQ
GROUP