



SMART METERING SOLUTIONS

Turning raw energy data into powerful insights

elvac^o



Collect. Connect. Make it count.

Elvaco turns raw energy data into powerful insights.
By bridging data and decisions, we enable smarter,
more efficient energy management – unlocking potential,
reducing costs, and enhancing sustainability, seamlessly.

Every day, energy data flows quietly through our world, filled with untapped potential. Elvaco is here to harness that potential. With a technology-neutral approach, we work across multiple communication standards to deliver smart metering solutions tailored to the unique needs of each client. From precise remote meter readings to full-scale digital integration, our solutions are built to collect and connect – transforming raw data into actionable insights.

Elvaco's expertise spans a comprehensive suite of technologies, including M-Bus, LoRaWAN, NB-IoT, and LTE. M-Bus provides precise communication for remote meter reading, available in both wired and wireless formats for flexible implementation. NB-IoT delivers fully wireless connectivity with optimized power consumption, while LoRaWAN offers a powerful network protocol for end-to-end smart solutions – from sensors to the head-end system. Our portfolio is rounded out by LTE, ensuring dependable, mobile-ready connectivity.

As a complete provider of products and services for remote meter reading, sub-metering, indoor climate control, and more, we make digitalization and energy efficiency accessible. With Elvaco's

industry-leading knowledge of metering and network protocols, we create a seamless flow of data from meter or sensor points to head-end systems, building management systems, or prepaid service providers. Our product range includes everything needed for any metering project – from gateways, communication modules, and meters to EVO, our cloud-based software for data and device management.

At Elvaco, we understand that the value of data lies in what you do with it. By connecting and collecting, we make sure you have the information you need to act faster, see clearer, and make a real impact – whether through cost optimization, operational security, or resource conservation. Our goal is to provide and manage the entire data measurement chain for our clients, adhering to international standards of data integrity and security while maintaining full interoperability on our meter-agnostic platform.

With high-quality products, world-class support, and fast deliveries, Elvaco is dedicated to making energy data not just accessible but transformative. Now it's your turn to take that data and make it count.

Infrastructure M-Bus, wM-Bus

Products to successfully build your end-to-end metering chain in the field.

In this product category, Elvaco offers all products needed to build an infrastructure for M-Bus or wireless M-Bus: gateways, masters, receivers and turn-key solutions. For more information, visit elvaco.com.

Elvaco Edge

Elvaco Edge is our latest, ground-breaking Gateway with included connectivity for wired and wireless M-Bus meters. It has versatile power supply options with best-in-class battery driven gateway.

Some of the benefits:

- Seamless and instant access to your meter values with included connectivity
- Extremely high sensitivity on wireless M-Bus reception
- Connect any M-Bus meter (wired or wireless) conforming to EN-13757 (EN1434) and OMS



CMe3100

The CMe3100 M-Bus Metering Gateway for fixed networks reads up to 512 meters, compiles reports, and sends data via fixed network protocols. It is configurable via web and supports MQTT, BACnet, ModBus, DLMS, JSON, REST, and includes a full M-Bus decoder.



CMe2100LTE

The CMe2100LTE M-Bus Metering Gateway for mobile networks reads up to 256 M-Bus meters, delivers reports via LTE, and supports 16 M-Bus loads. It is remotely configurable via SMS or HTTP and includes a full M-Bus decoder.





CMeX50

CMeX50 is a wM-Bus receiver enabling CMe Gateways to communicate with up to 800 meters in a secure way. It features individual encryption keys and has a cable-free IR interface for easy connection to CMe/ CMeX products.



CGc IP Box

The box is a turn-key solution for fixed networks. It includes a CMe3100 and CMeX50 or CMeX10S-13S, supporting up to 512 meters. It features a service breaker and is available for wired or wireless M-Bus (434 MHz and 868 MHz).



CGc LTE Box

The box is a turn-key solution for mobile networks. It includes a CMe3100, CMeX50 or CMeX10S-13S, and an LTE router for 4G/3G/2G. It supports wired (up to 512) or wM-Bus meters (434 MHz/868 MHz) and is ideal where LTE connectivity is required.



CMi-Box Receiver

The box includes a CMi5110 for wireless M-Bus data collection, forwarding to a metering gateway. Available with 24 V or 230 V power supply and internal or external antenna.



Sensors

Elvaco offers a wide range of sensors for measuring of, for instance, temperature, humidity, CO₂, movement and VOC level.

The sensors are available in different technologies, for indoor/outdoor use, and with different focus and functionalities. Some of the sensors are easily configured through a user-friendly mobile app.

Sense Series

Elvaco Sense is a sleek, wireless M-Bus sensor series for indoor use, measuring temperature, humidity, and CO₂. Battery-powered with up to 16 years' lifetime, they blend discreetly into commercial, public, and private spaces.



CMA Series

Cost-effective temperature and humidity sensors for indoor and outdoor use, supporting M-Bus or wireless M-Bus, with or without display—helping improve energy efficiency and indoor climate.



Display sensors

LoRaWAN sensors with e-paper display for indoor use, measuring CO₂, temperature, and humidity. With up to 10 years' battery life, easy NFC setup, and sleek Scandinavian design, they provide real-time data with minimal maintenance.





ERS LoRa

Indoor sensor, LoRaWAN, for temperature, humidity, light and motion.



ERS CO₂ LoRa

Indoor sensor, LoRaWAN, for CO₂, temperature, humidity, light and motion.



ERS CO₂ Lite LoRa

Indoor sensor, LoRaWAN, for CO₂, temperature and humidity.



ERS VOC LoRa

Indoor sensor, LoRaWAN, for VOC level, temperature, humidity, light and motion.



EMS LoRa

Indoor sensor, LoRaWAN, for temperature, humidity, acceleration, door openings/closings, and water leakage.



ELT LoRa

Outdoor sensor, LoRaWAN, for temperature, humidity, acceleration and atmospheric pressure.



Communication modules LoRaWAN

Elvaco offers integrated meter modules to all leading meter manufacturers for heat meters in the market.

The modules have long communication range and high energy-efficiency to meet the needs in IoT.
The modules are easily configured through Elvaco OTC (via NFC).

CMi4110

Integrated meter module for Landis+Gyr.
Compatible with L+G UH50, L+G UC50.



CMi4111

Integrated meter module for Landis+Gyr.
Compatible with L+G T230, L+G T330.



CMi4130

Integrated meter module for Itron.
Compatible with Itron CF 51, Itron CF 55, Itron ECHO II.



CMi4140

Integrated meter module for Kamstrup.
Compatible with Kamstrup MULTICAL 403/603/803.



CMi4160

Integrated meter module for Diehl Metering.
Compatible with Diehl SHARKY 775.



CMi4170

Integrated meter module for Engelmann.
Compatible with Engelmann SensoStar, Engelmann SensoStar C.



Communication modules NB-IoT

Elvaco offers integrated meter modules with NB-IoT communication for heat meters from well-known meter manufacturers.

The modules are designed to bring all the benefits of NB-IoT and to enable our customers to meet the higher requirements of range, lifetime and security. The modules are easily configured through Elvaco OTC (via NFC).

CMi6110

Integrated meter module for Landis+Gyr.
Compatible with L+G UH50, L+G UC50.



CMi6140

Integrated meter module for Kamstrup.
Compatible with Kamstrup MULTICAL 403/603/803.



CMi6160

Integrated meter module for Diehl Metering.
Compatible with Diehl Metering SHARKY 775, SCYLAR Int 8.



Software

Elvaco offers services aimed at simplifying processes for utilities and real estate companies.

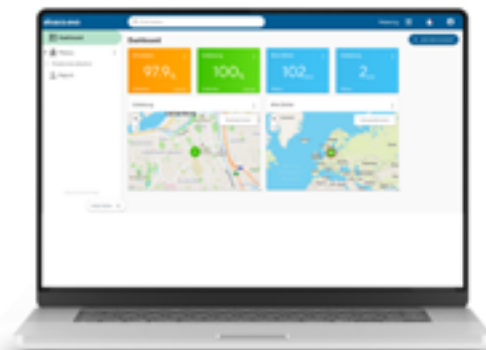
We deliver world-class energy metering and sub-metering, integrations and exports to your ERP/ BMS and support by our skilled staff. Our collection system is open, which gives you the freedom to choose meters or easily integrate your existing meter installations.

elvaco.evo

For visualization and analysis

Our meter value portal for visualization and analysis of energy data for utilities, property owners and service providers. The level of service is determined based on your needs and prerequisites - ranging from total responsibility to integration to existing metering system.

- Open meter platform
- Acquisition, visualization and analysis of measurement data
- Energy optimization in buildings
- Optimization of heat networks
- Meter alarms; threshold monitoring
- Demand-oriented, individual exports




Coming soon:

Elvaco Play

Managing metering data across multiple properties and devices can be a hassle – disconnected systems, outdated tools, and inefficient workflows slow you down. Elvaco Play changes that by bringing everything into one seamless platform.







We make it easy for you to see clearer, act faster, and do better. Whether it's optimizing costs, securing operations, or conserving resources, we make it all possible – seamlessly, accurately, and efficiently.

We **collect** and **connect**, to make sure you have everything you need to get it right.

Now it's your turn. **Make it count.**

elvaco

PART OF
BEMSIQ
GROUP